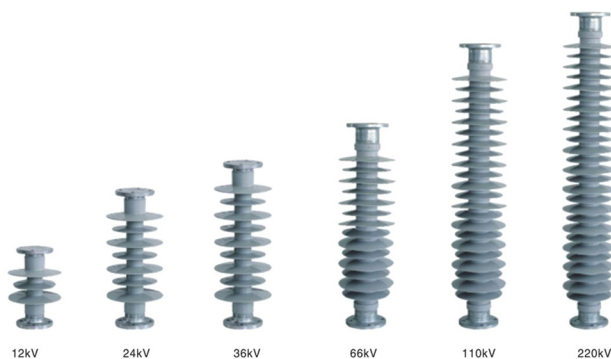


# Outdoor High-voltage Composite Insulator

## FZSW Series Post Composite Insulator

### FZSW Series Post Composite Insulator

This product is applied to high voltage power line service. And have features of good hydrophobicity, anti-ageing, antileakage trace and electric erode proof, tensile strength and bending strength strong mechanical strength, with good performance in shock resistance good quakeproof & brittle-breakproof, light weight, easy to installation, and the installation outline of top and base are the same size with porcelain type. They can exchange to use each other.



#### • Main technical parameters of post composite insulator

Type	Rated Voltage (kV)	Rated mechanical stretch load (kN)	Structure Height (mm)	Minimum arcing distance (mm)	Minimum nominal creepage distance (mm)	Diameter of shed D(mm)	Lightning impulse withstand voltage [peak] > (kV)	Power frequency withstand voltage (wet) > (kV)
FZSW-10/4	10	4	215	125	290	100/90	75	42
FZSW-15/5	15	5	245	170	600	150	125	50
FZSW-20/8	20	8	400	320	750	142	150	65
FZSW-35/6	35	6	450	360	946	148/118	185	95
FZSW-66/6	66	6	760	630	1886	160/130	410	185
FZSW-66/8	66	8	760	630	2010	220/190	410	185
FZSW-110/10	110	10	1220	1080	3530	220/190	500	230
FZSW-220/10	220	10	2440	2200	7060	220/190	1000	395