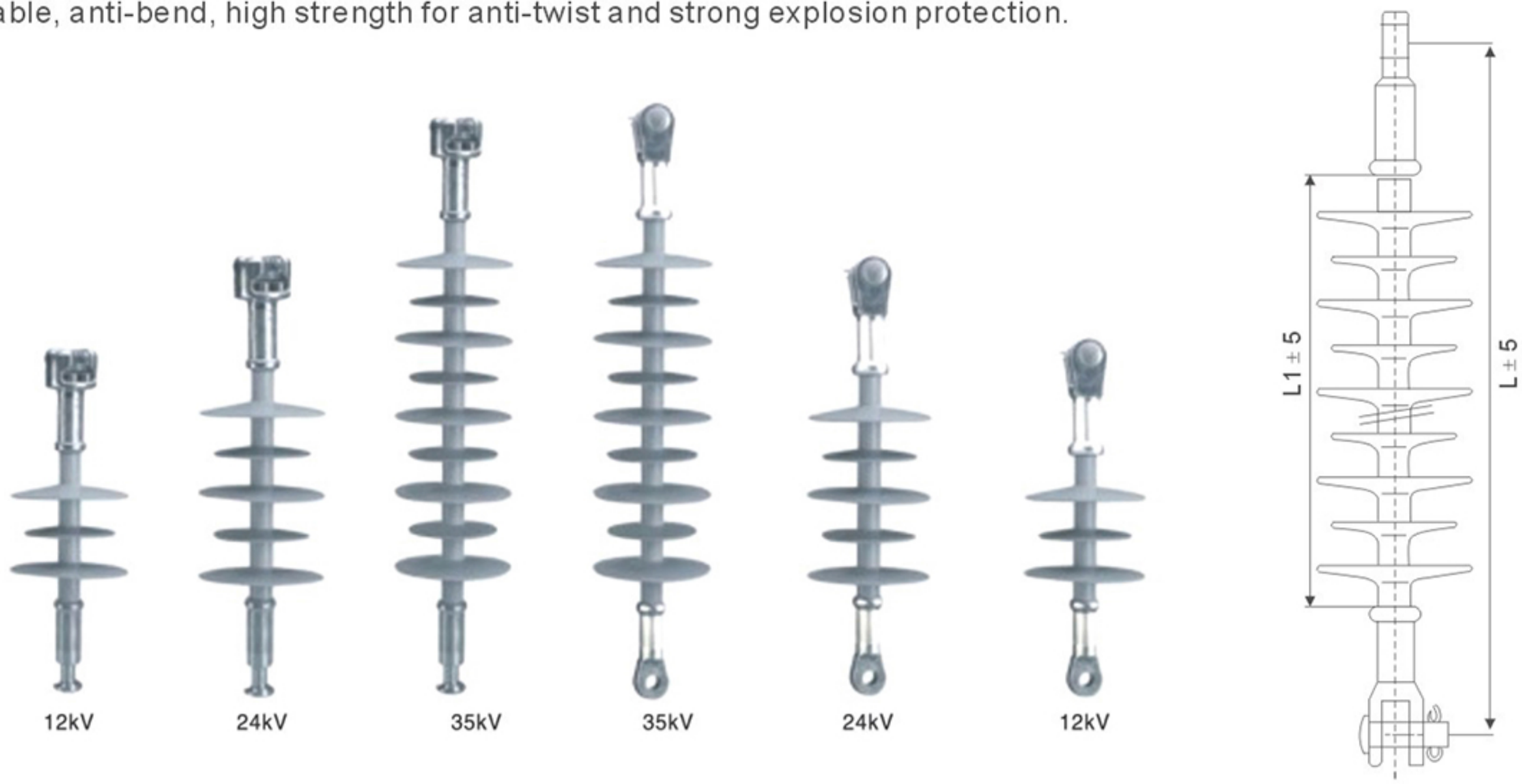


Outdoor High-voltage Composite Insulator

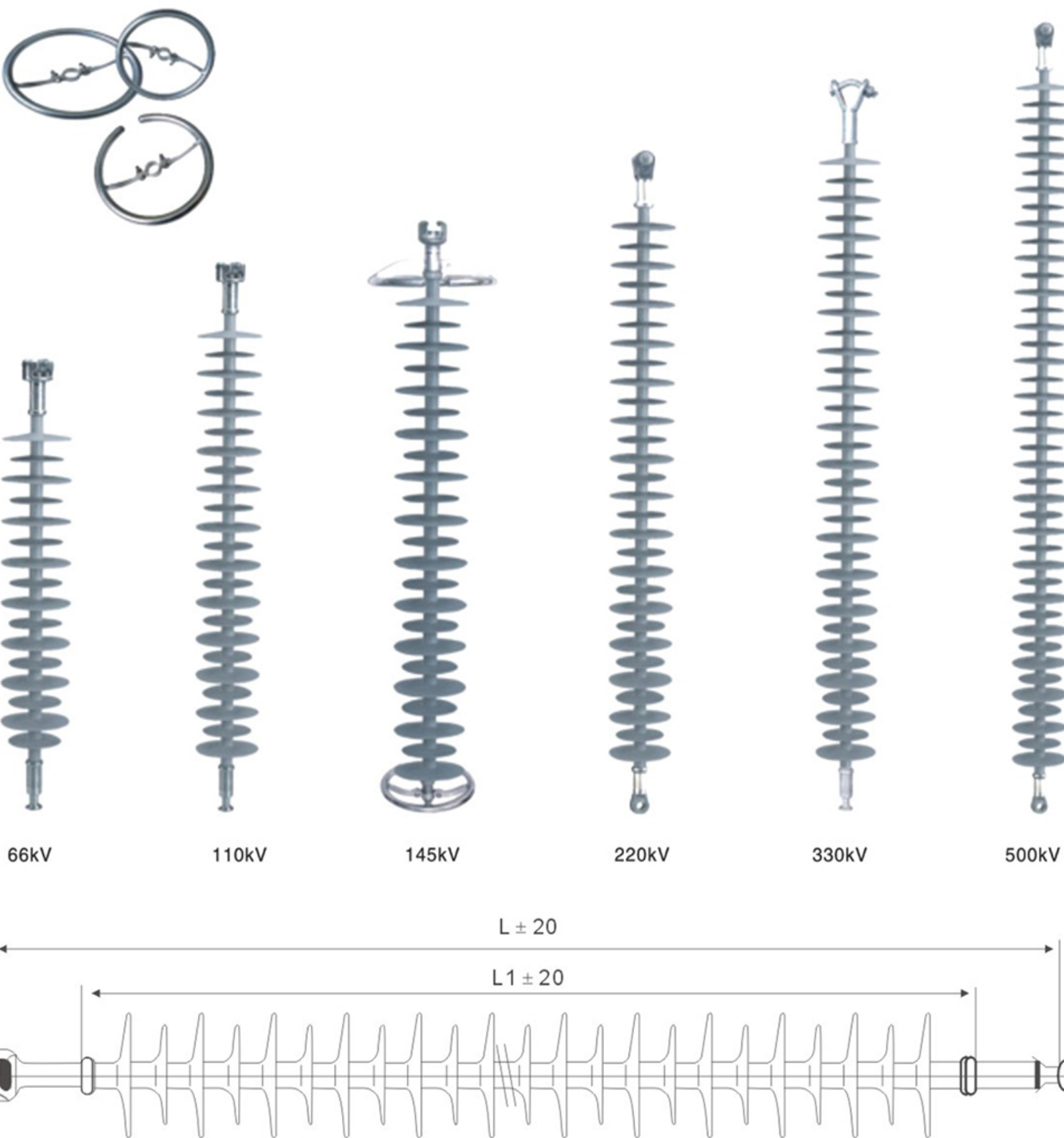
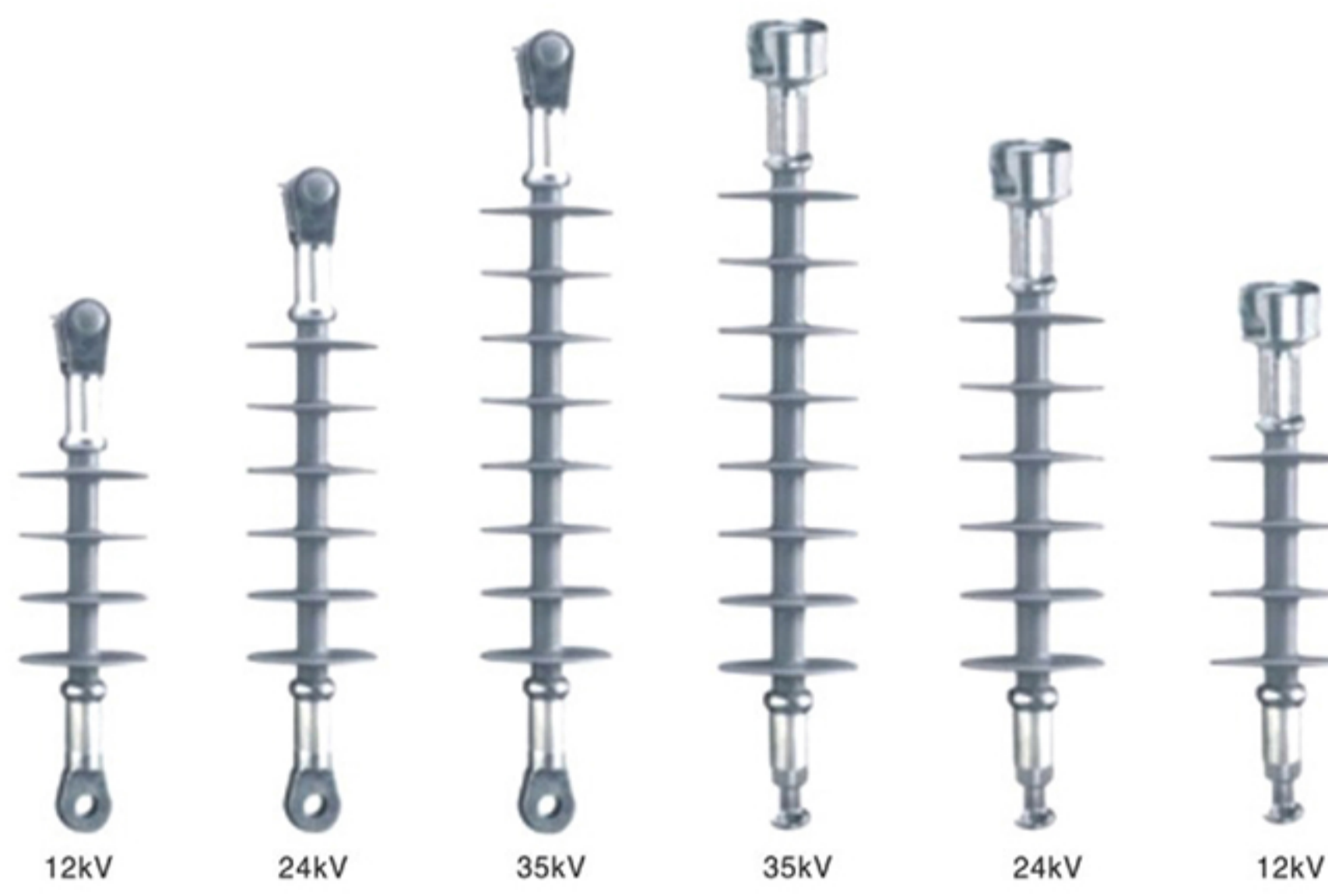
FXBW4 Series Suspension Composite Insulator

FXBW4 Series Suspension Composite Insulator

This product is special for badly polluted areas, high mechanical tension load, long span and compact power line. And have features of light weight, small volume, unbreakable, anti-bend, high strength for anti-twist and strong explosion protection.



Type	Rated Voltage (kV)	Rated mechanical stretch load (kN)	Structure Height (mm)	Minimum arcing distance (mm)	Minimum nominal creepage distance (mm)	Lightning impulse withstand voltage [peak] > (kV)	Power frequency withstand voltage (wet) > (kV)
FXBW4-12	12-15	70/100/120	345	155	465	95	45
			355				
FXBW4-24	24-27	70/100/120	435	245	755	185	95
			445				
FXBW4-35	33-38	70/100/120	615	425	1300	230	105
			625				



• Main technical

Type	Rated Voltage (kV)	Rated mechanical stretch load (kN)	Structure Height (mm)	Minimum arcing distance (mm)	Minimum nominal creepage distance (mm)	Lightning impulse withstand voltage [peak] > (kV)	Power frequency withstand voltage (wet) > (kV)
FXBW4-66	66-72	100/120/160	900	680	2200	410	185
FXBW4-110	110-132	100/120/160	1240	1012	3200	550	230
FXBW4-145	132-145	100/120/160	1660	1440	4600	600	260
FXBW4-220	220-240	120/160/210	2160	1930	6300	1000	395
FXBW4-330	210-350	120/160/210	2990	2600	8600	1425	570
FXBW4-500	500-550	120/160/210	4080	3730	12250	2250	740